



KIT CAR REFINISH EASY CLICK

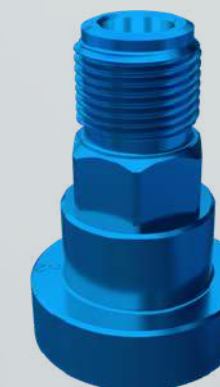


CÓDIGO CAR REPAIR SYSTEM

CÓDIGO 3M

Tipo de rosca

Tamanho da rosca



2012-001821

#15

Macho

G3/8-19

FINER CORE / F410



REFERÊNCIAS

2012-001700	180 ML 125 μ m
2012-001701	400 ml 125 μ m
2012-001702	650 ml 125 μ m
2012-001703	650 ml 190 μ m
2012-001704	850 ml 125 μ m
2012-001705	850 ml 190 μ m
2012-001730	850 ml 190 μ m

SATA



KIT CAR REFINISH EASY CLICK



CÓDIGO CAR REPAIR SYSTEM

CÓDIGO 3M

Tipo de rosca

Tamanho da rosca



2012-001820

2012-001822

2012-001824

2012-001828

#2

#40

#5

Fêmea

Macho

Macho

Macho

M16*1.5

Φ13.7

M16*1.5

M12*1.5

Jet B / Jet B NR-92 / Jet B NR-95



JET X5500



QCC Series



Rosca



KL-Primer



MCB-93



REFERÊNCIAS

2012-001700	180 ML 125 μm
2012-001701	400 ml 125 μm
2012-001702	650 ml 125 μm
2012-001703	650 ml 190 μm
2012-001704	850 ml 125 μm
2012-001705	850 ml 190 μm
2012-001730	850 ml 190 μm

DEVILBISS®



KIT CAR REFINISH EASY CLICK



REFERÊNCIAS

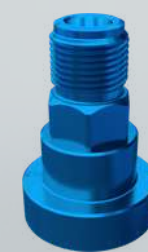
2012-001700	180 ML 125 µm
2012-001701	400 ml 125 µm
2012-001702	650 ml 125 µm
2012-001703	650 ml 190 µm
2012-001704	850 ml 125 µm
2012-001705	850 ml 190 µm
2012-001730	850 ml 190 µm

CÓDIGO CAR REPAIR SYSTEM

CÓDIGO 3M

Tipo de rosca

Tamanho da rosca

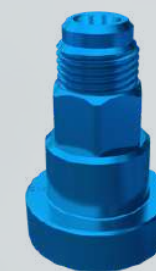


2012-001821

#15

Macho

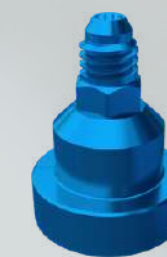
G3/8-19



2012-001824

Macho

M16*1.5



2012-001829

#14

Macho

7/16-14

CVi 522G / 620G / 620GW	✓		
DRD / EXL620G	✓		
FLG 4 Gravity	✓		
FLG 615 / 635 / 643 / 645 / 647WB / 648 / 651G / 654 / 691 / 695	✓		
GFG 5 / 516 / 517 / 618 / 670 Plus	✓		
Família GTI / DV1	✓		
JGA535G / 635G	✓		
PRI / TEKNA	✓		
Compact506 /510 gravity	✓		
Slg		✓	
Compact mini			✓
Família Sri			✓



KIT CAR REFINISH EASY CLICK



REFERÊNCIAS

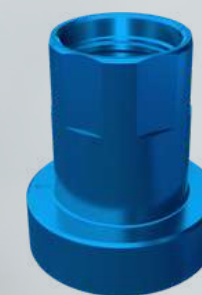
2012-001700	180 ML 125 μ m
2012-001701	400 ml 125 μ m
2012-001702	650 ml 125 μ m
2012-001703	650 ml 190 μ m
2012-001704	850 ml 125 μ m
2012-001705	850 ml 190 μ m
2012-001730	850 ml 190 μ m

CÓDIGO CAR REPAIR SYSTEM

CÓDIGO 3M

Tipo de rosca

Tamanho da rosca

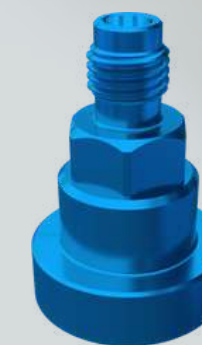


2012-001827

#32

Fêmea

M18*1.5



2012-001828

#5

Macho

M12*1.5

4100 GTO



4400 / 4500 Xtreme



403G / 433G / 434G / 444G / 450G



3300G



4100G / 4200G



Mini Xtreme



Classic pro



KIT CAR REFINISH EASY CLICK

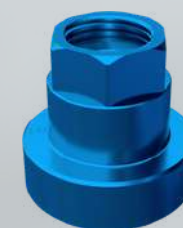


CÓDIGO CAR REPAIR SYSTEM

CÓDIGO 3M

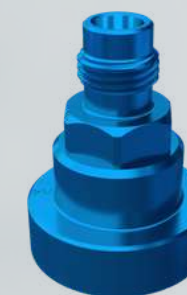
Tipo de rosca

Tamanho da rosca



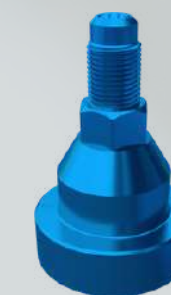
2012-001820

#2
Fêmea
M16*1.5



2012-001823

#43
Macho
G1/4-19



2012-001830

#31
Macho
G1/8-28

REFERÊNCIAS

2012-001700	180 ML 125 μ m
2012-001701	400 ml 125 μ m
2012-001702	650 ml 125 μ m
2012-001703	650 ml 190 μ m
2012-001704	850 ml 125 μ m
2012-001705	850 ml 190 μ m
2012-001730	850 ml 190 μ m

W400 / W400LV / WR400	✓		
LPA94 / LPH440	✓		
LPH400 Primer	✓		
LPH400LV / LVB / LVX	✓		
VX929 / VXL949 Primer	✓		
Supernova LS400		✓	
Supernova WS400		✓	
AZ3 HTE 2		✓	
LPH-80mini			✓